



VALLEY COOPERATIVE ASSOCIATION

OFFICE AND WAREHOUSE
GREENVILLE, WISCONSIN

.....
"WE RELY ON HOFFMAN TO QUALIFY THE ELIGIBILITY OF THE SUPPLIERS; IN MOST CASES ENABLING US TO SELECT THE LOWER BIDS WITH CONFIDENCE THAT THE PERFORMANCE WILL BE FIRST RATE." – Mark Munroe, president/CEO

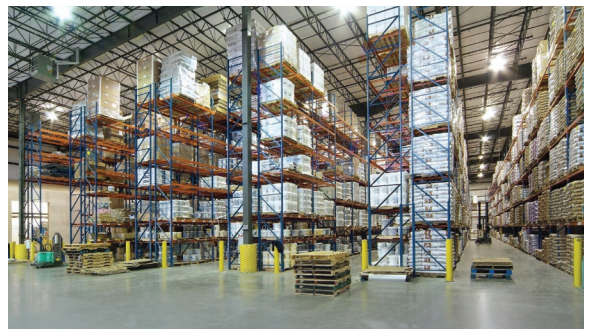
Eager to end the inefficiencies of operating two locations performing different functions, Valley Cooperative Association (VCA) enlisted Hoffman's assistance in developing a responsible business solution that would better serve both them and their customers.

Realizing the ideal solution was having all functions under one roof, VCA looked to Hoffman to lead the expansion of their Greenville, Wisconsin facility, making it spacious enough to house all employees and functions.

The office and warehouse expansion and remodeling, totaling over 48,000

square feet, included the addition of mixed-use office space, a mezzanine, and a dry storage area, as well as an expansion of the existing loading dock. The expansion and remodeling has created a desirable work environment and helped improve daily communication and efficiencies for VCA employees.

SCOPE: Expansion, renovation
AREA: 48,500 sq. ft.
COMPLETION DATE: 1/2007



800.236.2370 | www.hoffman.net