



COLUMBIA COUNTY

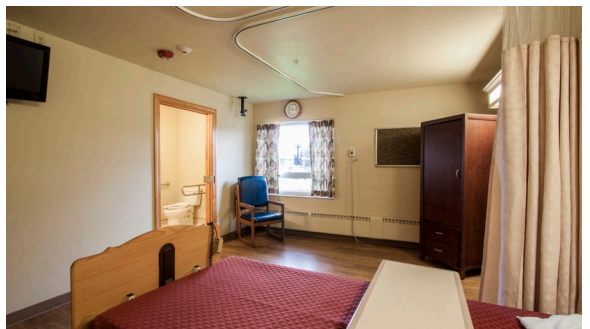
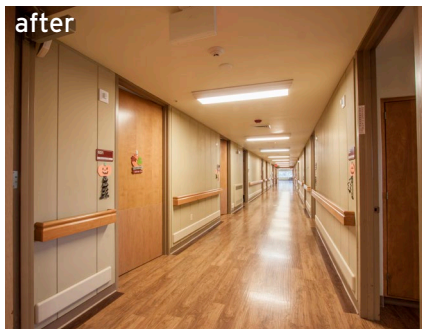
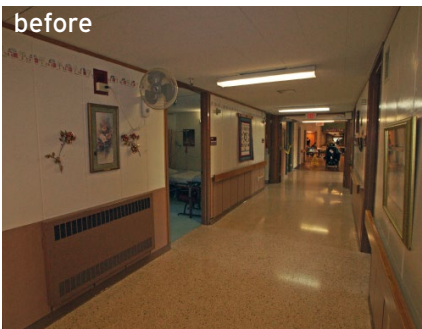
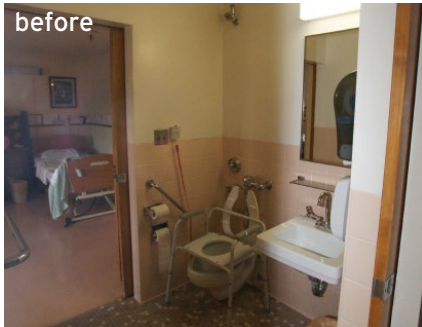
HEALTH CARE CENTER
WYOCENA, WISCONSIN

Opened in 1966, the Columbia Health Care Center facility in Wyocena, Wisconsin, met resident needs at the time. More than four decades later, the facility posed challenges to providing care as most residents are wheelchair bound and require two or more caregivers and specialty equipment. Still in good physical condition, Columbia Health Care Center sought improvements to bring the building up to current ADA and life safety codes. Columbia County partnered with Hoffman to provide planning, design, and construction services for the 122-resident facility.

Renovations included additional, larger resident bathrooms; smaller, more intimate dining areas; an enhanced community gathering area; updated finishes throughout the facility; an upgrade of the ventilation system; and softening of the current environment to appear less institutional. Work was and continues to be done while the facility is fully occupied, using a multi-phased construction approach. Through creative thinking, life-safety minded solutions were developed to move the project forward with as little disruption as possible to staff and residents. For example,

two temporary exterior corridors were created to serve as safe paths during construction. They will remain after the project is completed and become outside porch areas for resident use.

SCOPE: Renovation
AREA: 90,000 sq. ft.
COMPLETION DATE: 12/12



800.236.2370 | www.hoffman.net